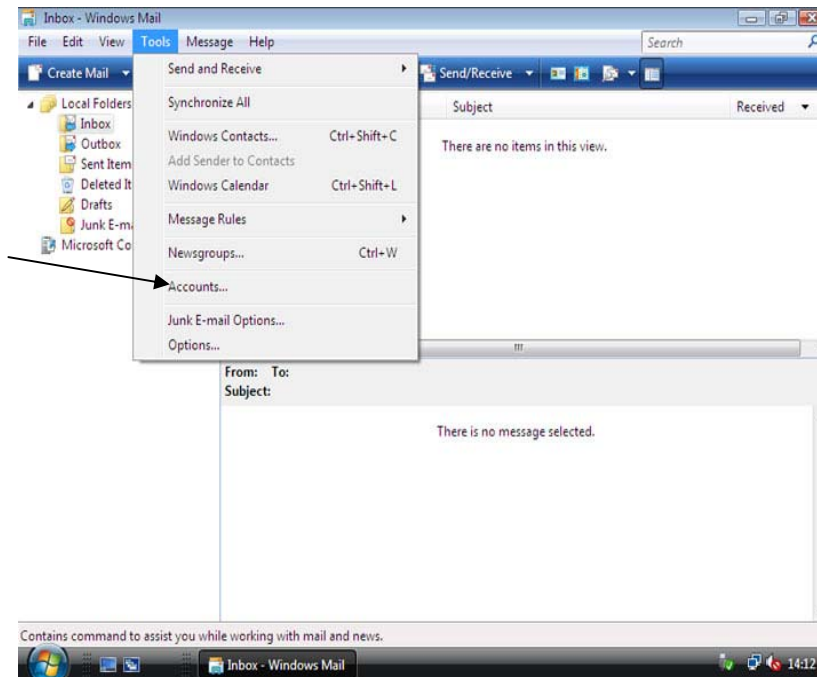
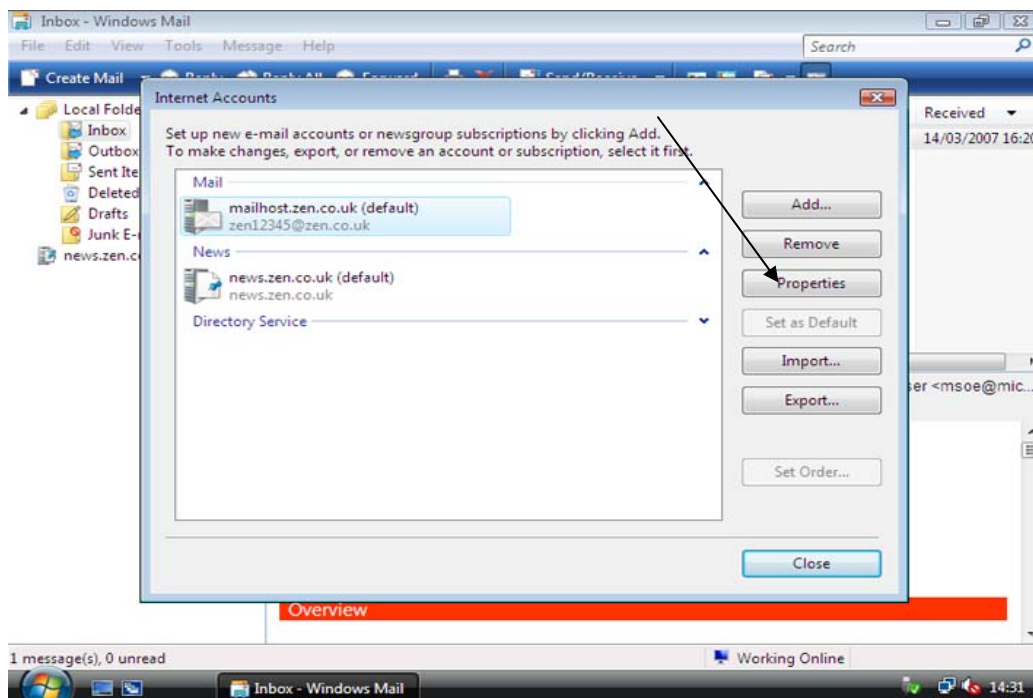


## Windows Mail (Vista)

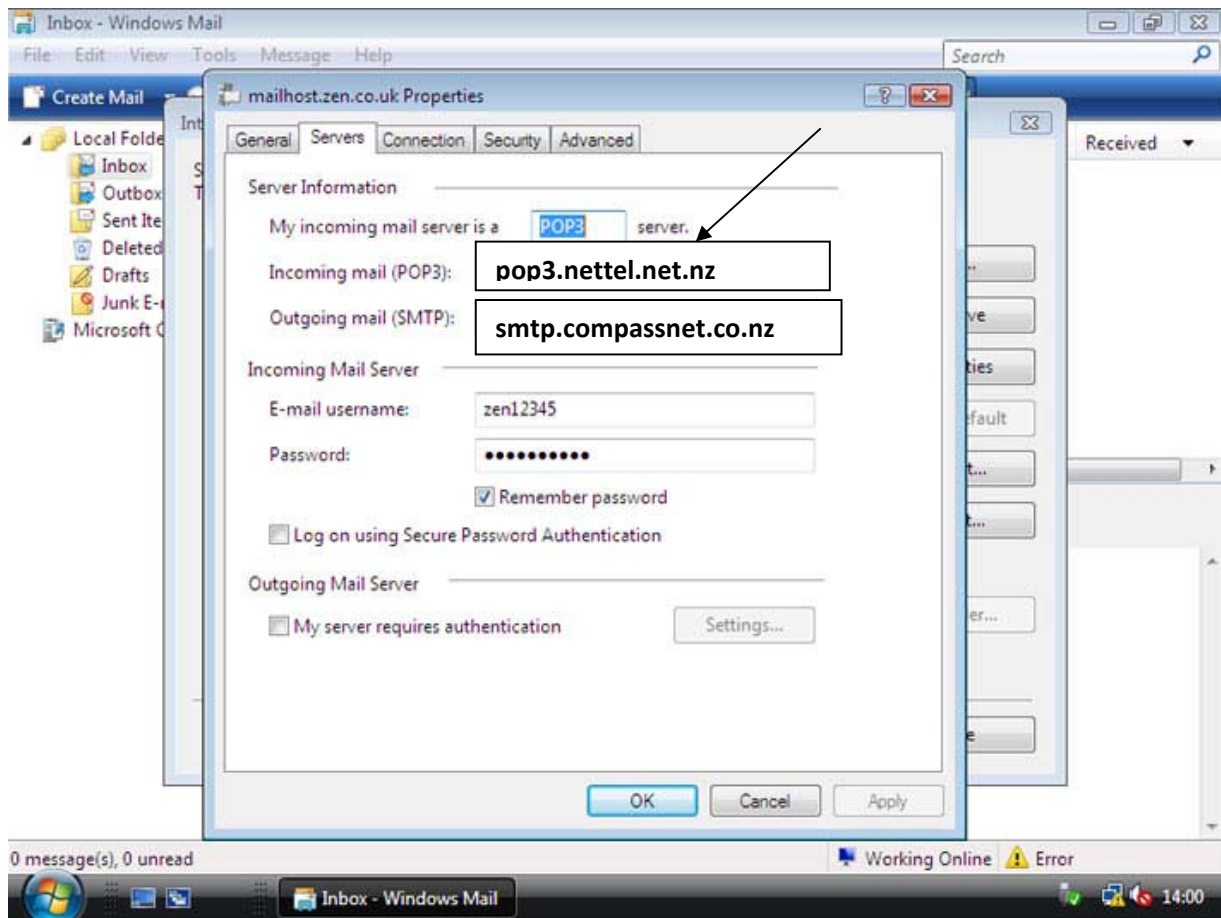
1. Click on **tools** and then **accounts**.



2. Select ( highlight) your email account under **MAIL** and click on **properties** on the right hand side.



3. Click on the **servers** tab and change the following details:



**Change the following**

Incoming mail (POP3)- **pop3.nettel.net.nz**

Outgoing mail server (SMTP) - **smtp.compassnet.co.nz**

Click **apply** and **ok**