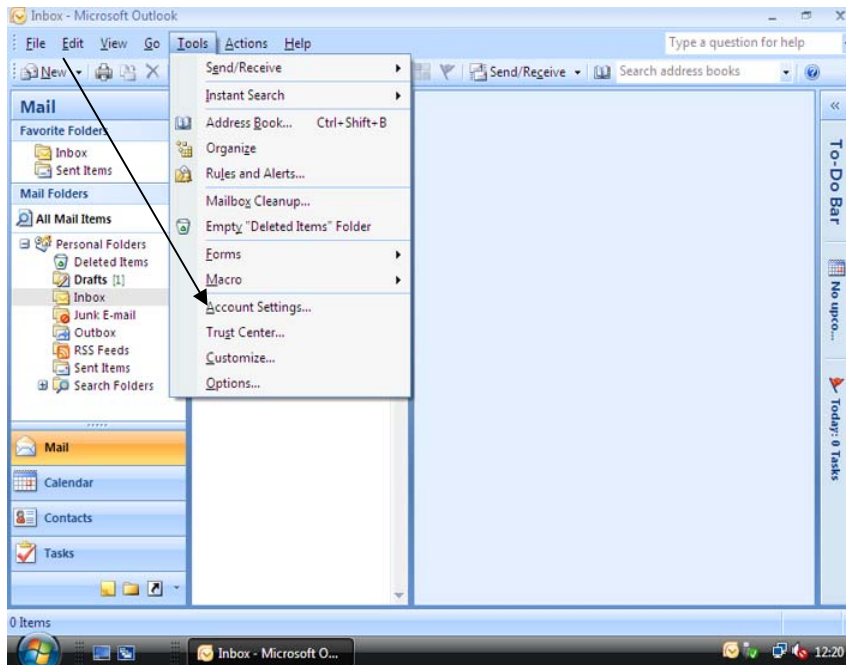
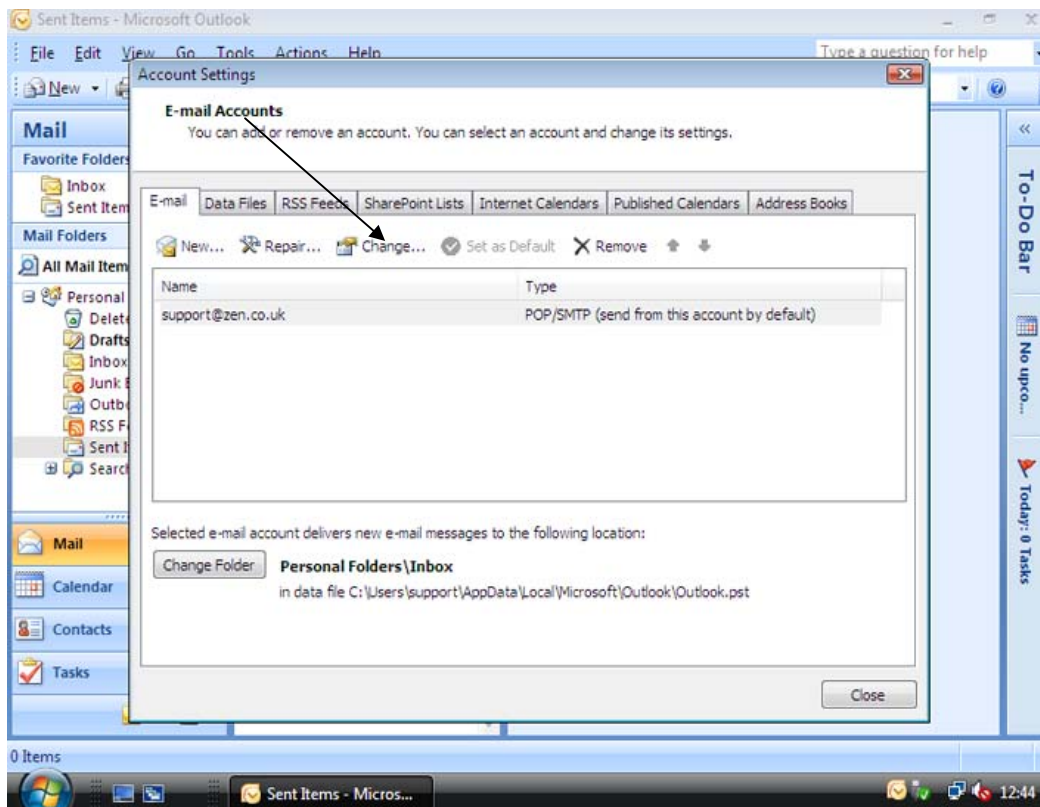


## Microsoft Outlook 2007

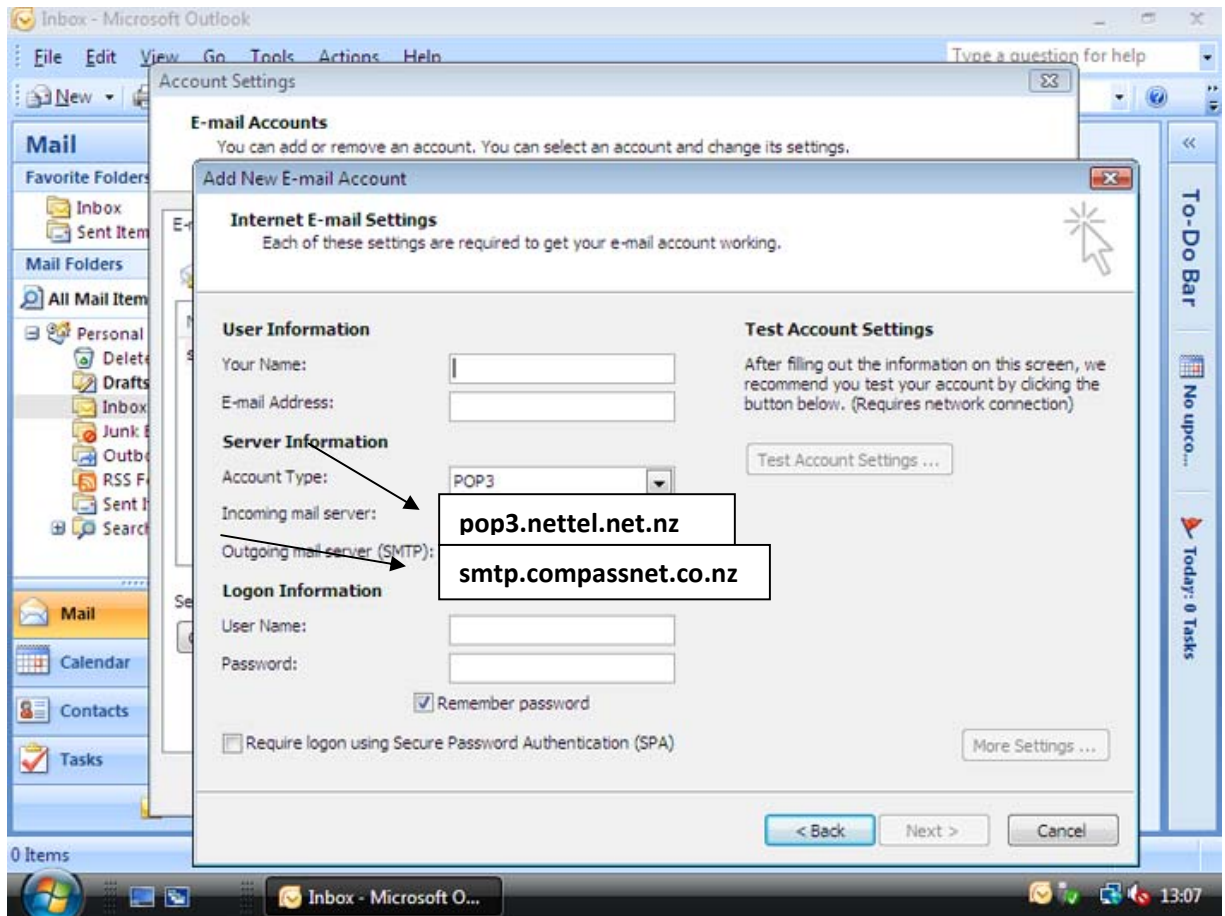
1. Click on **tools** and select **accounts settings**.



2. Select your email account and click on **change**



3. Under **Server Information** change the following



Incoming mail server (POP3) –**pop3.nettel.net.nz**

Outgoing mail server (SMTP)-**smtp.compassnet.co.nz**

4. Click next and then finish.